

SUPER MUD/GAS SEPARATOR

The M-I SWACO SUPER MUD/GAS SEPARATOR* offers the highest gas- and liquid-handling capacity available. Its highly efficient baffling system maximizes mud/gas separation, enabling operators to drill deeper, larger-diameter wells and exploratory wells at higher circulating rates while safely handling greater volumes of gas. It also minimizes mist carryover and gas-cut mud at the flow line.*

Features

Large 6- x 22.3-ft (1.8- x 6.8-m) diameter vessel with 12-in. (304.8-mm) flare line. Allows the highest gas- and liquid-handling capacity available.

Optimizes safety and control. The SUPER MUD/GAS SEPARATOR unit enhances safe drilling practices during underbalanced conditions, improves “kick” handling capabilities, permits optimum circulation rates and large-diameter holes to be drilled through the targeted zone, provides more efficient separation of emulsions and gas-cut mud in either gas or oil environments, and eliminates the need and cost of a skimming system in a gas environment.

High-efficiency baffle system. Maximizes mud/gas separation, minimizes mist carryover which produces a cleaner flare and minimizes gas-cut mud at the flow line.

Capable of pressured operation. Increases gas- and liquid-handling capacities and permits immediate sale of gas during drilling operations.

Adjustable U-tube (liquid seal) height to 14 ft (4.3 m) without additional elevation of the vessel. Increases vessel pressure, creating higher flare capacity, enabling more efficient separation of emulsions and gas-cut mud in either gas or oil environments.

Higher liquid-capacity vessel with multiple nozzle ports. Permits pumping of “hot” mud directly into the vessel to reduce gas hydrates. Increases mud gradient within U-tube to increase gas-handling capacity.



Features

- Highest gas- and liquid-handling capacity available
- Designed for constant underbalanced drilling
- Highly efficient baffling system maximizes mud/gas separation
- Capable of pressured operation
- Adjustable U-tube height without additional elevation vessel
- Manufactured to exacting standards
- Self contained; skid mounted

Benefits

- Drill deeper, larger-diameter wells and exploratory wells at higher circulating rates
- Minimizes mist carryover and gas-cut mud at the flow line
- Optimizes safe drilling practices
- Permits immediate sale of gas during drilling operations
- Enables more efficient separation of emulsions and gas-cut mud in either oil or gas environments

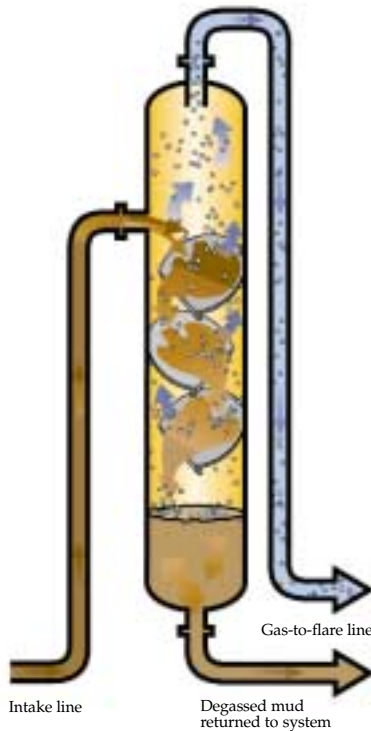


Customer-focused, solutions-driven

Manufactured to exacting standards in accordance with:

- NACE MR-01-75 for H₂S service — Provides for safe handling of corrosive, deadly sour gas and gas-cut drilling fluids.
- OSHA 29CFR 1910 for safety — Provides safe and easy access for rig-up and servicing via ladder and platform system.
- ASME Boiler and Pressure Vessel Code Section VIII, Division I, Section IX, Lethal Service and So Stamped — Provides maximum rigsite safety during underbalanced drilling operations.

M-I SWACO SUPER MUD/GAS SEPARATOR



Designed for constant, underbalanced drilling

Handles H₂S/sour gas 200-ft (61-m) and flare line up to 12-in. (304.8-mm) diameter
8-in. (203.2-mm) inlet and 12-in. (304.8-mm) return flow lines

Separated mud is returned to circulating system

Atmospheric operation:¹

Gas capacity 65 MMscf/d

Fluid capacity 38,000 bbl/d

Pressured operation:

Gas capacity 83 MMscf/d

Fluid capacity 59,000 bbl/d

Vessel height: 22.3 ft (6.8 m) flange to flange

Vessel diameter: 6 ft (1.8 m)

Weight: 24,000 lb (10,866 kg)

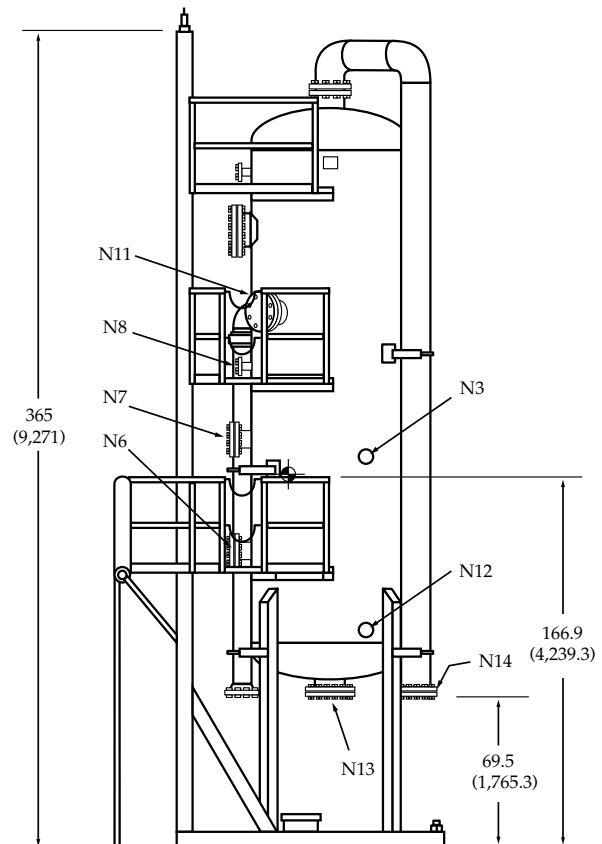
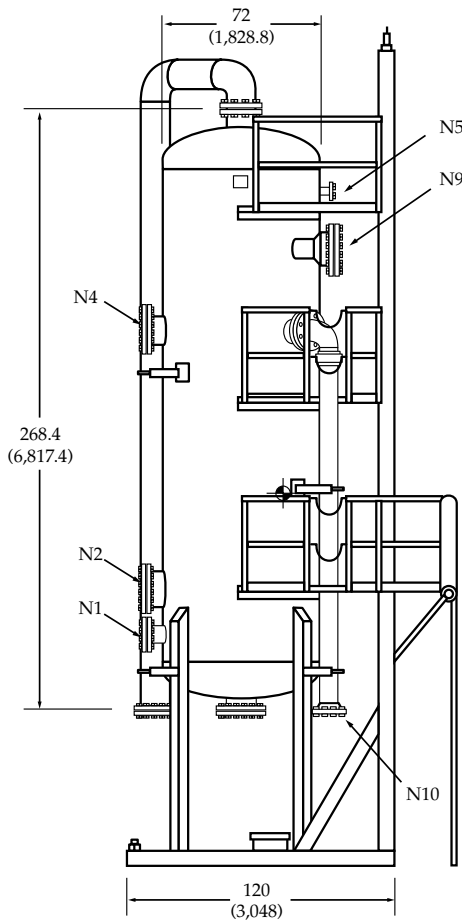
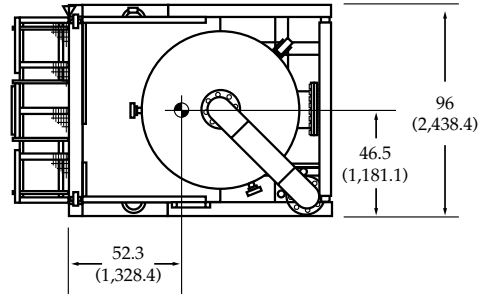
Skid: 8 x 10 x 30.4 ft (2.4 x 3 x 9.3 m)

¹Gas and liquid-handling capacity can be increased by customizing your system configuration.

Engineering Drawing: SUPER MUD/GAS SEPARATOR

All dimensions are expressed in inches (millimeters).

| Nozzle | Size in. (mm) | Rating lb (kg) | Description |
|--------|------------------|-------------------|-----------------------------|
| N1 | 8 (203.2) | 150 (68) | Mud discharge/hot mud inlet |
| N2 | 16 (406.4) | 150 (68) | Manhole inspection port |
| N3 | 2 (50.8) | 150 (68) | Sensor port |
| N4 | 12 (304.8) | 150 (68) | Secondary mud inlet |
| N5 | 2 (50.8) | 150 (68) | Sensor port |
| N6 | 6 (152.4) | 150 (68) | Liquid level/hot mud inlet |
| N7 | 6 (152.4) | 150 (68) | Liquid level/hot mud inlet |
| N8 | 2 (50.8) | 150 (68) | Sensor port |
| N9 | 16 (406.4) | 150 (68) | Manhole inspection port |
| N10 | 8 (203.2) | 150 (68) | Primary mud inlet |
| N11 | 12 (304.8) | 150 (68) | Secondary mud inlet |
| N12 | 2 (50.8) | 150 (68) | Sensor port |
| N13 | 12 (304.8) | 150 (68) | Mud discharge |
| N14 | 12 (304.8) | 150 (68) | Gas discharge |



This information is supplied solely for informational purposes and M-I SWACO makes no guarantees or warranties, either expressed or implied, with respect to the accuracy and use of this data. All product warranties and guarantees shall be governed by the Standard Terms of Sale.

©1998 M-I LLC All rights reserved.
*Mark of M-I LLC
MS-04283 11/04 Litho in U.S.A.

Mi SWACO

P.O. Box 42842
Houston, Texas 77242-2842
Tel: 281-988-1866
1-800-654-0660
Fax: 281-988-1888
www.miswaco.com
E-mail: questions@miswaco.com